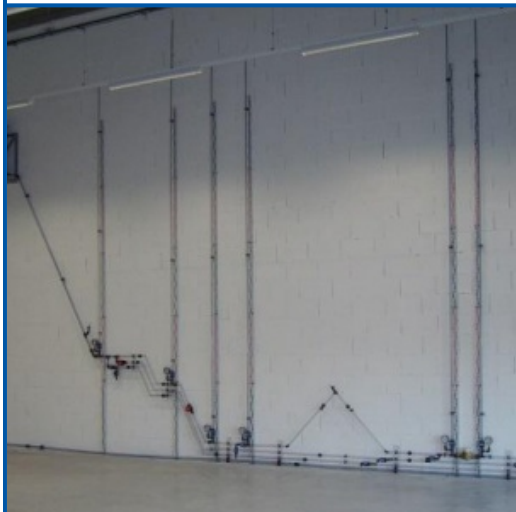


# STUDY OF A GRAVITY FEED SYSTEM FOR DRINKING WATER / VISUALIZATION



*Non contractual photo*

**SERVICE : POWER SUPPLY: 230 V - 50 HZ  
SINGLE PHASE, 1.5 KW OR 380 V - 50 HZ  
THREE PHASE 1.5 KW COLD WATER 20 ° C  
/ 3 BAR: FOR FILLING SEWER  
DIMENSIONS : 1800 X 850 X 4300 MM**

**WEIGHT : ~150 KG**

## REFERENCE : MP79AD

- Determination of reference planes, piezometric lines and energy lines of a given flow
- Characterization of the flows under pressure during the transient regimes
- Water treatment by chlorination
- Comparison of the management systems of such a system

### Specific security for the installation :

- Power supply with 30mA differential protection device
- Low level alarm on input tray
- Emergency stop punch protection

## Technical specifications :

1 "Low" water tank equipped with : 1 Low level alarm; 2 return tees; 1 Drain valve; 1 set of bypass valves; 1 transparent protective cover

1 Dewatering pump Centrifugal type stainless steel body.

1 Water treatment system composed of :

Chlorine feed tray; Equipped with : 1 drain cock

1 Peristaltic chlorine feed pump; Electronic speed control; Potentiometer control

1 Supply pipe of the tank in charge of the pump equipped with; 1 speed water meter with single jet; 1 Control valve

1 Feed pipe of the tank under load by an external power supply equipped with: 1 PVC tube diameter 25 mm; 1 volumetric type water meter; 1 solenoid valve; 1 Pressure Tapping Manifold

1 Loaded bin equipped with : 1 Low level alarm; 1 High level alarm; 1 Arrival of the pumping station; 1 Too full return to the pumping station; 1 Departure to distribution network; 1 transparent protective cover

1 Overflow pipe of the loaded tank equipped with: 1 Tube diameter 32 mm

1 Gravity distribution network :

Length developed: about 15m in PVC tube diameter 20 mm

1 Series of taps for racking

1 Set of isolation valves

1 set of flow control valves

1 Set of water and water purges

The proposed construction will adapt to the building structure

1 Channel back from the end of the network to the tank

**Instrumentation :**

- 1 peristaltic pump speed variation consisting of: 1 electronic speed controller
- 1 EEC / ISO single jet speed water meter
- 1 Electrical network analyzer consisting of: 1 Instrument with 3 digital displays: currents, voltage, frequency, cos phi, power and energies
- 2 EEC / ISO volumetric water meters
- 1 Pressure logger
- 1 Flow measurement
- 8 pressure measurements consisting of: 8 manometers
- 6 piezometric columns of water column height composed of: 6 transparent PVC tubes diameter C; 6 scale scales graduation: 10 cm

**Binding pipe :**

Process: PVC

**Control and Interface Cabinet composed of :**

- 1 IP55 cabinet
- 1 General switch with indicator
- 1 Emergency stop punch protection
- 1 Set of fuses

On / Off buttons and all instrumentation interfacing equipment specific to the "PILOTE"

**Support frame :**

- Tubes 304L stainless steel aluminum nuts
- Wall fixing on 4 walls